



CARTSCAN

CART 3D LASER SCANNING SYSTEM

EFFICIENT - SAFE - ACCURATE - SIMPLE - PRACTICAL - AFFORDABLE

SCANS ORE PASSES AND WASTE PASSES

- CartScan is lowered into a pass and stopped every few meters to perform stationary scans.
- Video is recorded by on-board HD camera.
- Data are received and processed after the scan.

TECHNICAL SPECS

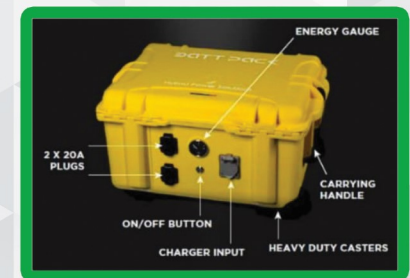
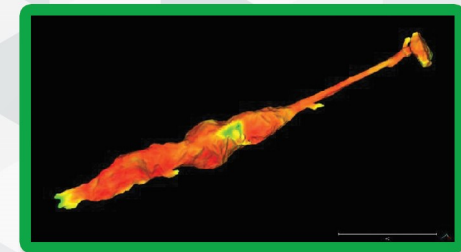
- High Grade Steel/Aluminum Frame
- Durable Pneumatic Tires
- 2 LED Lights
- Mounts: Real Time Scanner and Versatile Scanner
- 1080p HD Camera

BENEFITS AND FEATURES

- Designed for underground mines
- Scanner is detachable and can be mounted on post, tripod, drone, ground vehicle, etc.
- Capable of mobile and stationary 3D Laser Scanning
- Extensively tested in underground mines
- 3D visualization, localization and mapping

INCLUDES

- Cart
- LiDAR
- HD Camera
- Winch
- Battery Pack
- Geo-Referencing Markers
- Mobile Scan Pre-Processing Software
- Post-Processing Software
- Carrying Case
- Accessories
- Email and Phone Support
- Optional Maintenance Plan



www.clickmox.com

info@clickmox.com

+1-705-207-5345